

COLOR

33 CLASS

BLOCK



COLOR BLOCK

LAMINATE CLASSIFICATION

CLASS	21	22	23	31	32	33	34
UTILIZATION	AC1	AC2	AC3		AC4	AC5	AC6
ABRASION RESISTANCE	≥500	≥1000	≥2000		≥4000	≥6000	≥8500



Specifications

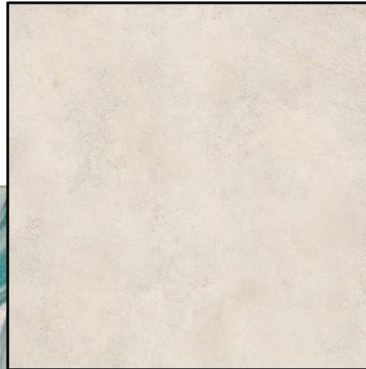
Plank dimensions	244 X 1380 mm
Floor area per pack	2,694 m ²
Number of boards per pack	8
Pack weight	18,72 kg
Number of packs on pallet	60
Gross weight of pallet	1138,2 kg
Application class	33
Installation system	Uniclick
Surface structure	Vintage
Bevel	4V
Number of decors	6



COLOR BLOCK

FP 1201

**LUNAR
JADE**



FP 1202

**PALLADINO
MARBLE**



FP 1203

**PERSIAN
JASPER**



COLOR BLOCK



FP 1204

**WHITE
TIN**



FP 1205

**PHANTOM
ONYX**



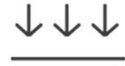
FP 1206

**ARABESCATO
MARBLE**





Fast and easy
installation



Mechanical impact
endurance



Eco-friendly



UV-resistance



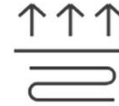
Hygienic



Stain resistant



Resistant
to smoldering
cigarette



Underfloor
heating system
compatible



Easy to clean



COLOR BLOCK



European E1 certificate confirms low formaldehyde emissions and product safety



Moisture resistant laminate flooring. Swelling test T-connections*

*TU16.21.14-003-65501405-2022



"Blue Angel" is one of the best known and oldest certificates for environmentally friendly products and services in the world.

www.blauer-engel.de/uz176



Hygiene certificate





FP 1203



PERSIAN
JASPER





FP 1205

PHANTOM
ONYX





KASTAMONU

KASTAMONU SETS TRENDS!

Kastamonuentegre.com/ru_ru



All rights reserved. It is secret and private.
It can be used for Kastamonu Entegre and Kastamonu Entegre customers.