



NATURAL

Art FLOOR
'Laminate Flooring'

Brochure 2024



**Water Resistant
Laminate Flooring**



KASTAMONU



Healthy Living Spaces with the Laminate Flooring Collections Having Hygiene+ Feature

To live a healthy life, It is extremely important to have living spaces that are clean and free from bacteria. Manufactured with advanced technology, all the products in our laminate flooring collections with Hygiene+ feature leave no space for bacteria to reproduce. Bacteria and microbe can be transferred to the flooring via shoes, spilled liquids, pets and other sources. However, the Hygiene+ feature does not allow bacteria and the microbes to reproduce. Both you and your loved ones' health are protected.

The results of tests conducted on our laminate flooring collections with Hygiene+ feature have proved that the bacterial activity expected to be seen is blocked up to 99.9% within 24 hours.

(Tested according to ISO 22196)



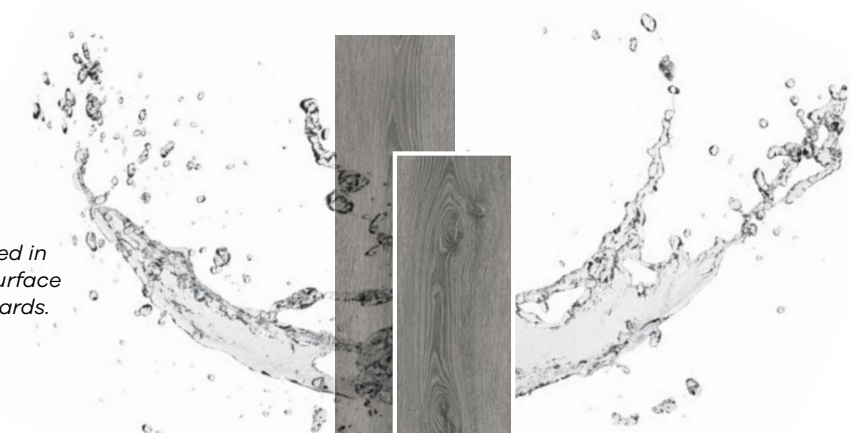
Worlds First Eco Label "Blue Angel" Belongs to Artfloor for the First Time in Turkey

"The Blue Angel" is a certificate stating that laminate flooring products do not contain any chemicals that could be hazardous to health or environment.



Water Resistant Laminate Flooring

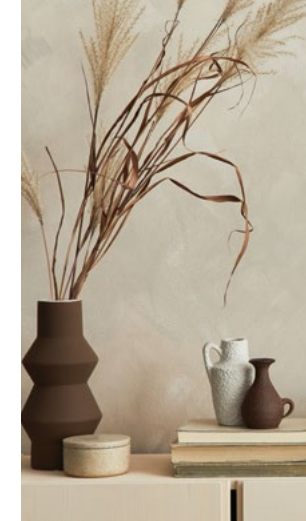
Artfloor **Natural** series provide superior durability and protection against water and moisture for **24 hours**.



Our products are manufactured in compliance with the NALFA Surface Swell Test and ISO 4760 standards.



Natural and simple, just like its name.
The perfection of a unique character and an extraordinary beauty.
Simple as nature, indispensable like nature... **NATURAL**

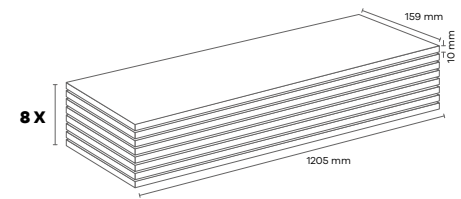


NATURAL



AN003 JAKARTA MERBAU (CNT)

AC4 10 mm 4V

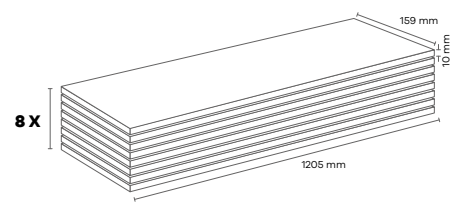


Panel / Package: 8 Pieces
Package: 1,533 m² -13 kg



AN009 LEFKAS OAK (CNT)

AC4 10 mm 4V

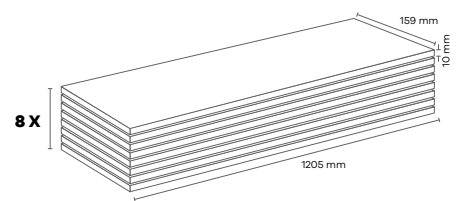


Panel / Package: 8 Pieces
Package: 1,533 m² -13 kg



AN014 ANTIQUE WHITE (CNT)

AC4 10 mm 4V



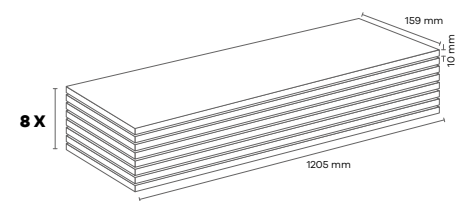
Panel / Package: 8 Pieces
Package: 1,533 m² -13 kg





AN016 ALTINKUM (CNT)

AC4 10 mm 4V



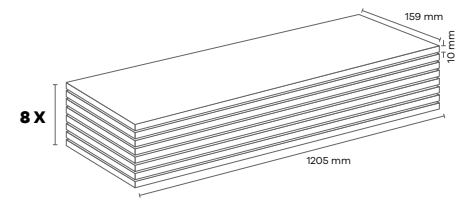
Panel / Package: 8 Pieces
Package: 1,533 m² -13 kg





AN018 SAND OAK (CNT)

AC4 10 mm 4V

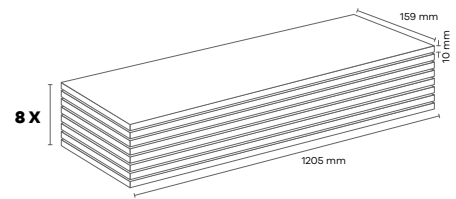


Panel / Package: 8 Pieces
Package: 1,533 m² -13 kg



AN019 ALBATROS (CNT)

AC4 10 mm 4V



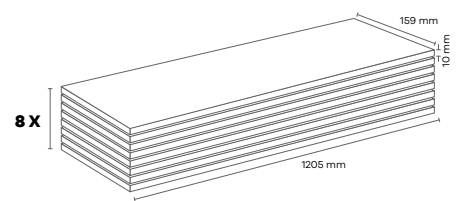
Panel / Package: 8 Pieces
Package: 1,533 m² -13 kg





AN020 DIBEK OAK (CNT)

AC4 10 mm 4V



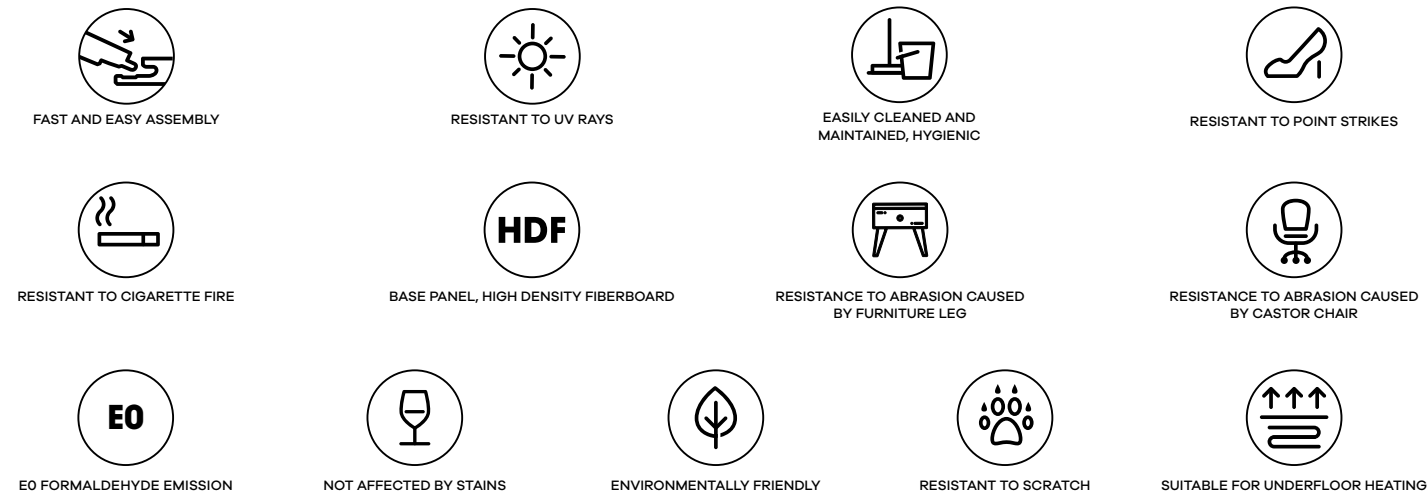
Panel / Package: 8 Pieces
Package: 1,533 m² -13 kg





ARTFLOOR

The Advantages of Laminate Flooring



01 - OVERLAY HIGH QUALITY SURFACE PROTECTION RESISTANT TO WEAR AND SCRATCH
02 - DECOR PAPER REFLECTING THE CHARACTERISTICS OF THE PRODUCT WITH A UNIQUE DESIGN
03 - HDF STRONG BASE PANEL, RESISTANT TO HIGH PRESSURE PRODUCED AS PER E1 NORM
04 - BALANCE PAPER PROTECTS AGAINST HUMIDITY AND DISTORTION

Laminate Flooring Classification

CLASS	21	22	23	31	32	33	34
UTILIZATION	AC1	AC2	AC3		AC4	AC5	AC6
ABRASION RESISTANCE	≥ 500	≥ 1000	≥ 2000		≥ 4000	≥ 6000	≥ 8500
RESISTANCE TO STAINS	Min. 4 (group 1 and 2) Min. 3 (group 3)		Min. 5 (group 1 and 2) Min. 4 (group 3)		Min. 5 (group 1, 2, 3)		

bridging **nature and life**

www.kastamonuentegre.com

www.artfloor.com.tr

